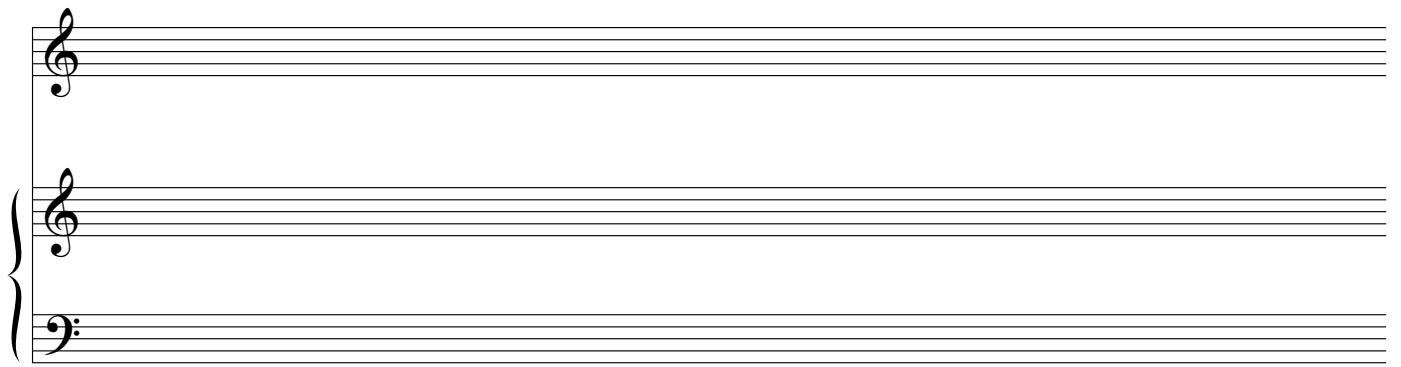
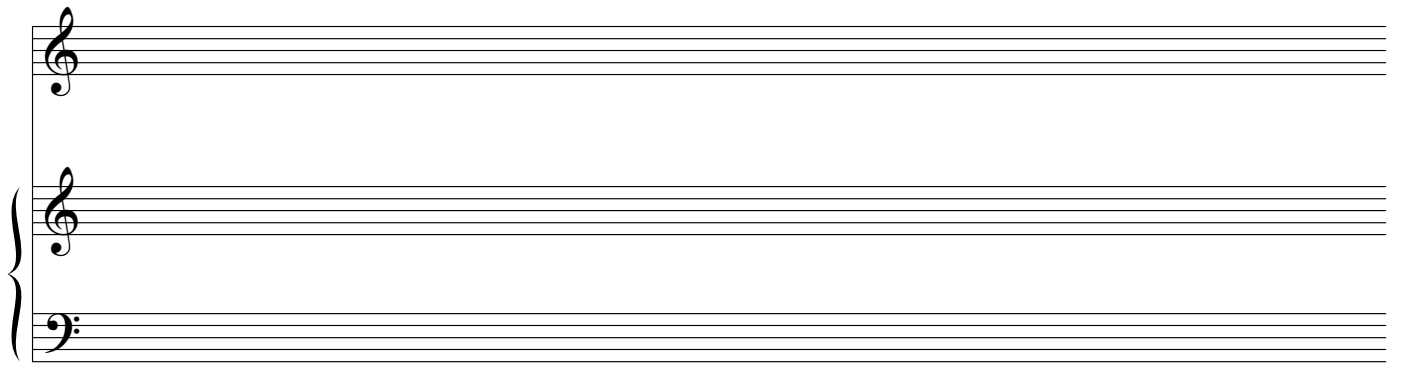
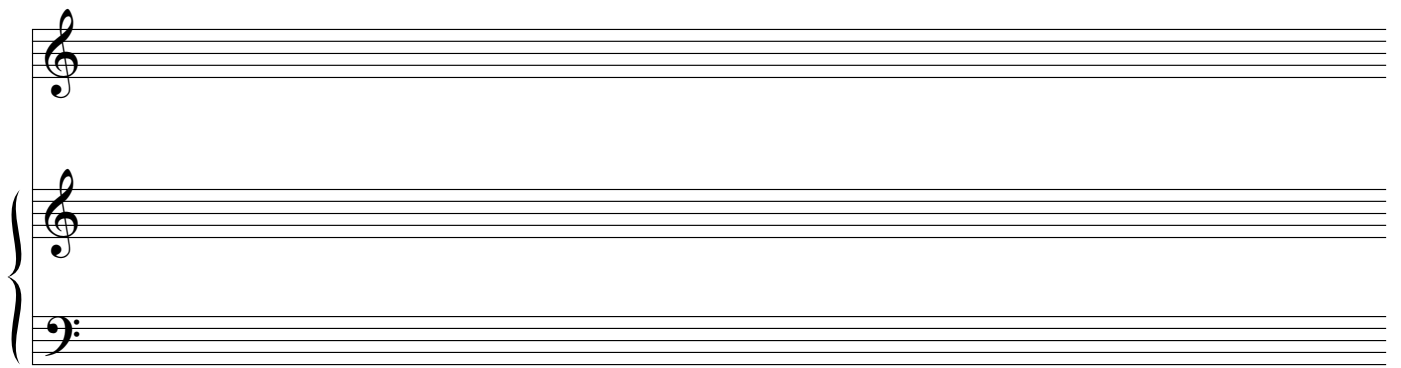
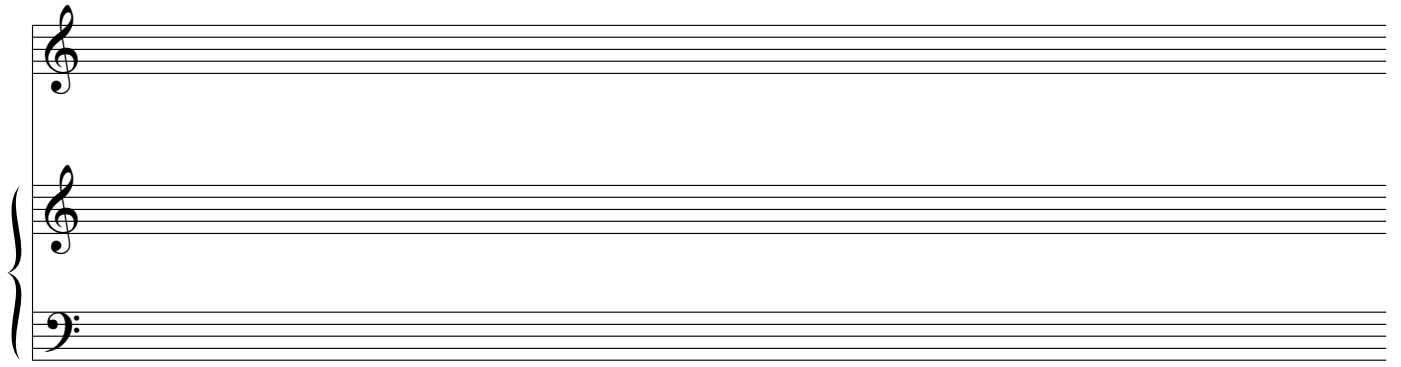


A system of four musical staves. The top two staves are empty. The third staff contains a treble clef, and the fourth staff contains a bass clef. A large left-facing curly brace groups the two lower staves.

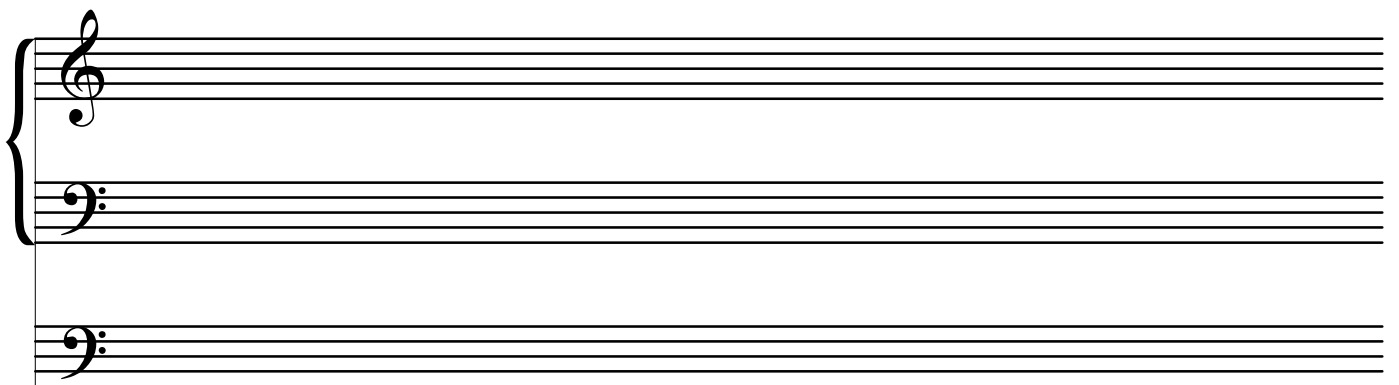
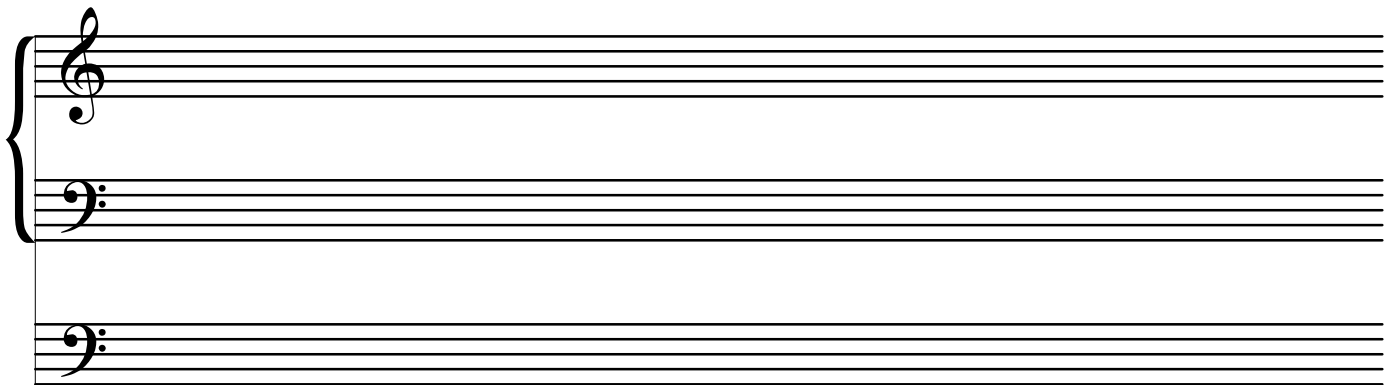
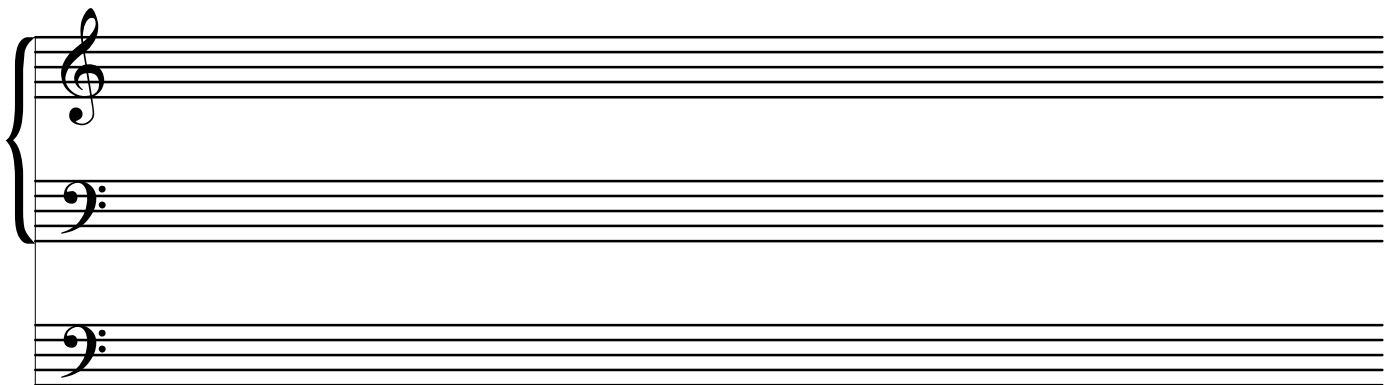
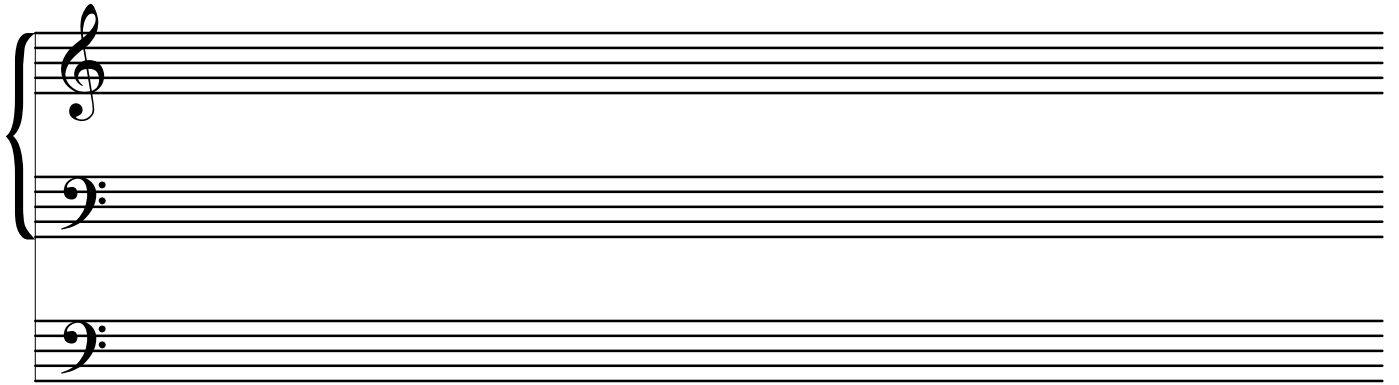
A system of four musical staves. The top two staves are empty. The third staff contains a treble clef, and the fourth staff contains a bass clef. A large left-facing curly brace groups the two lower staves.

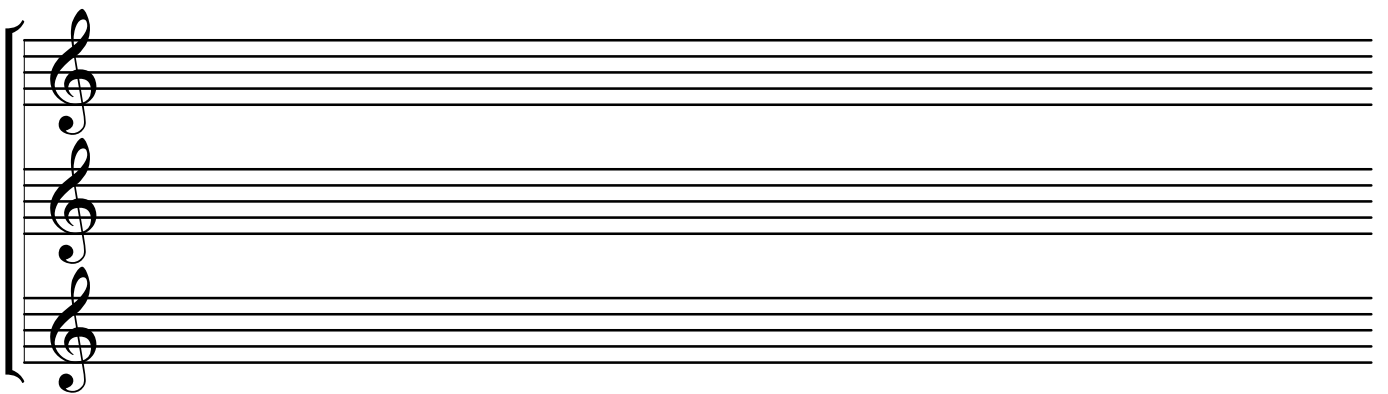
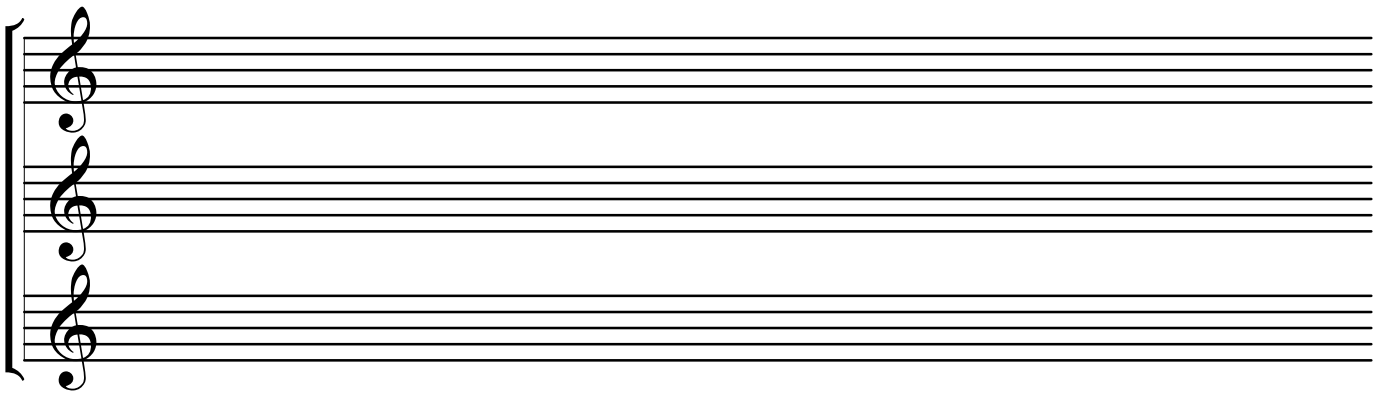
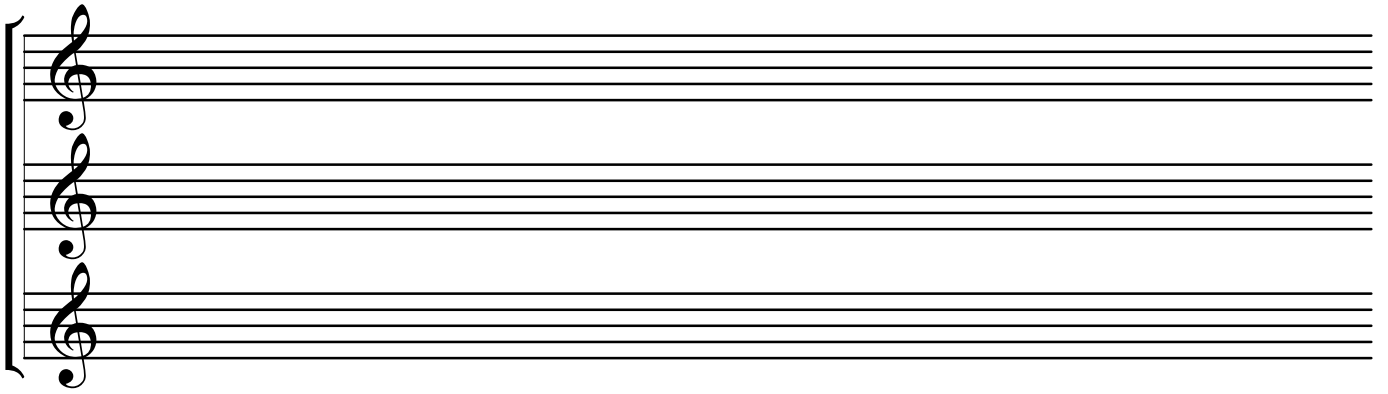
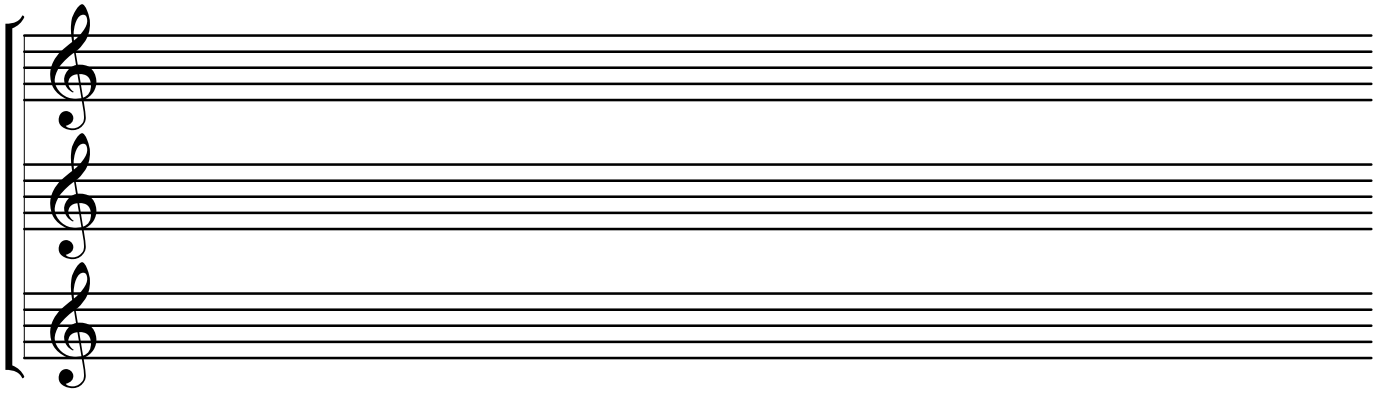
A system of four musical staves. The top two staves are empty. The third staff contains a treble clef, and the fourth staff contains a bass clef. A large left-facing curly brace groups the two lower staves.

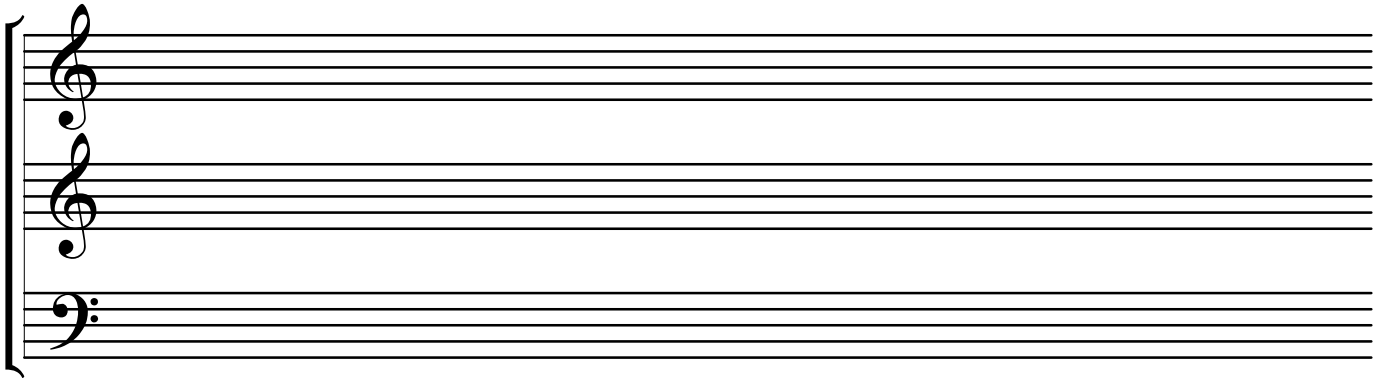
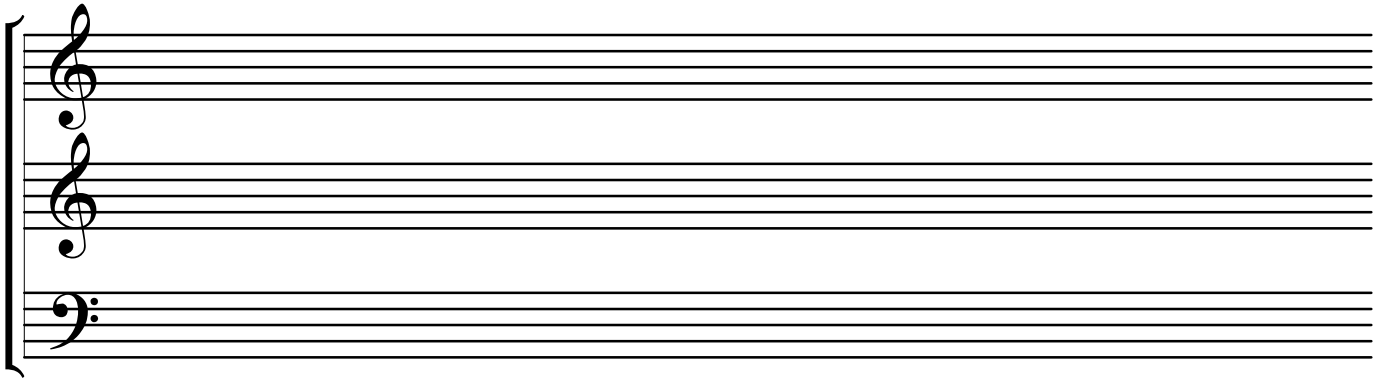
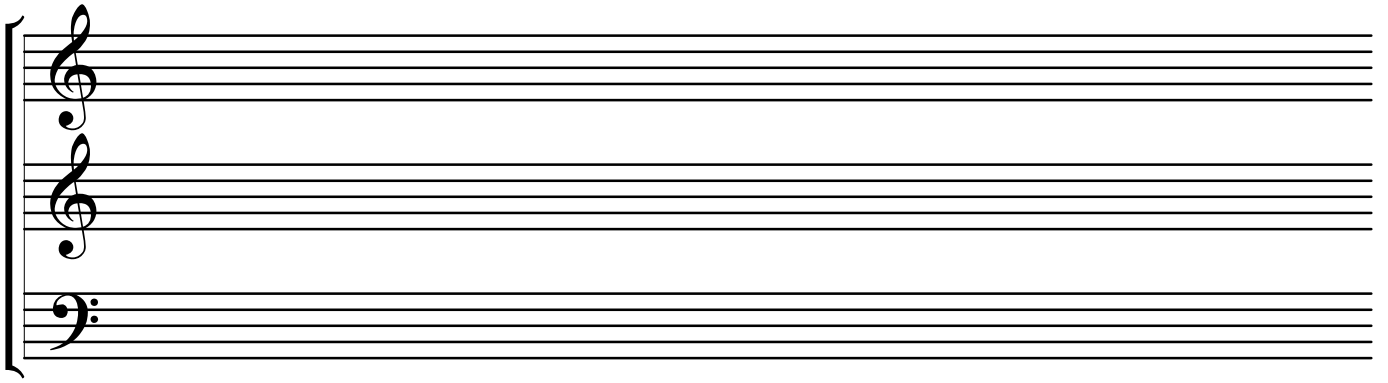
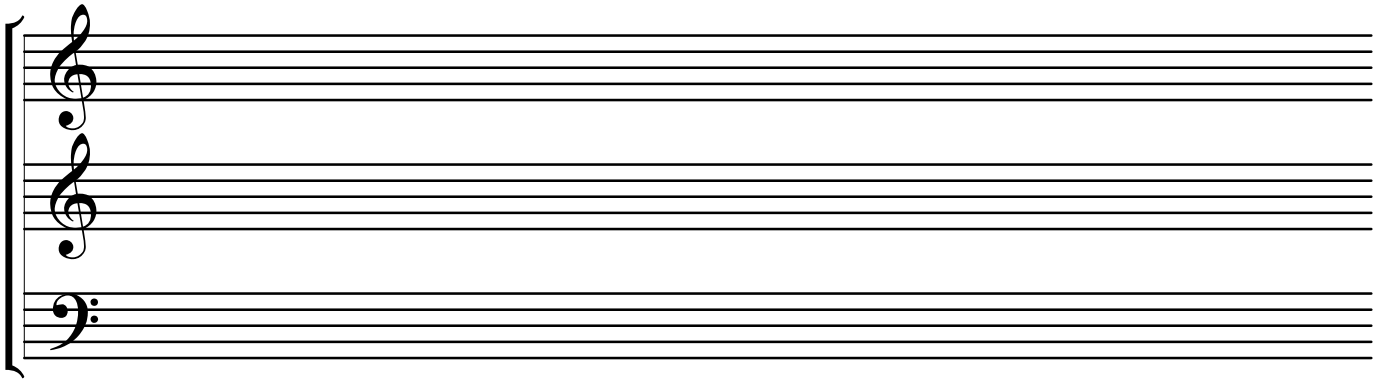
A system of four musical staves. The top two staves are empty. The third staff contains a treble clef, and the fourth staff contains a bass clef. A large left-facing curly brace groups the two lower staves.

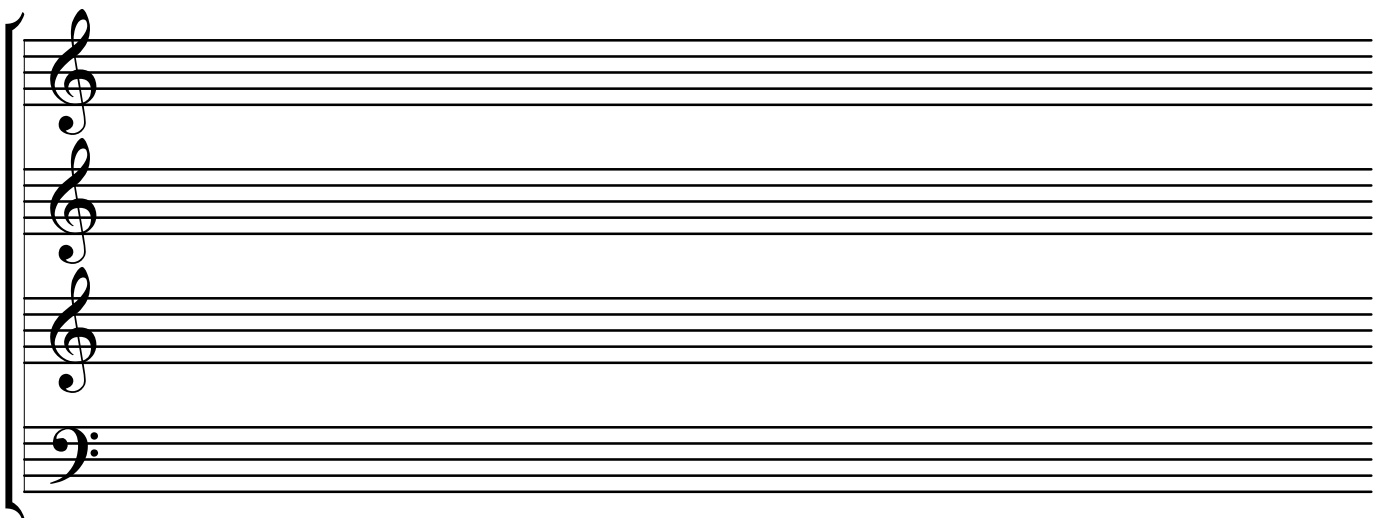
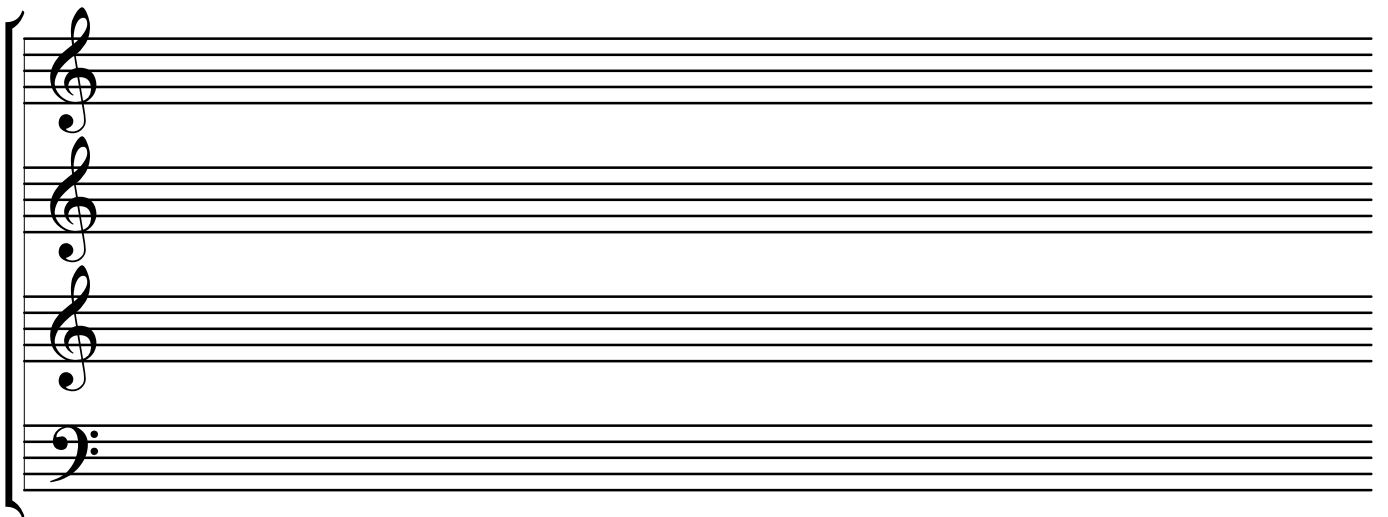
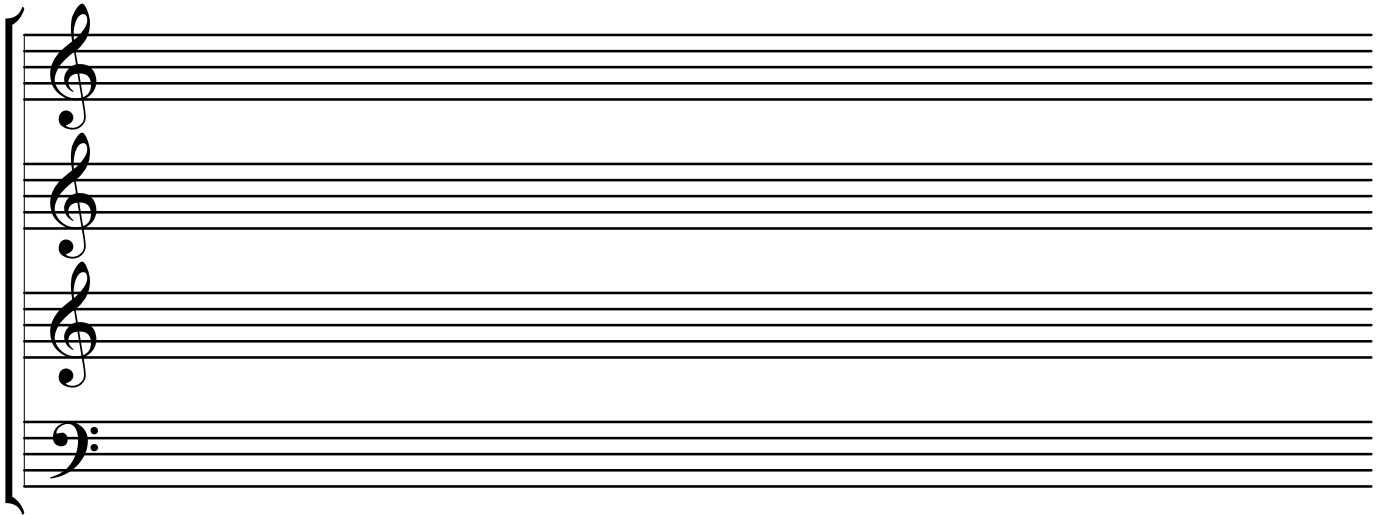


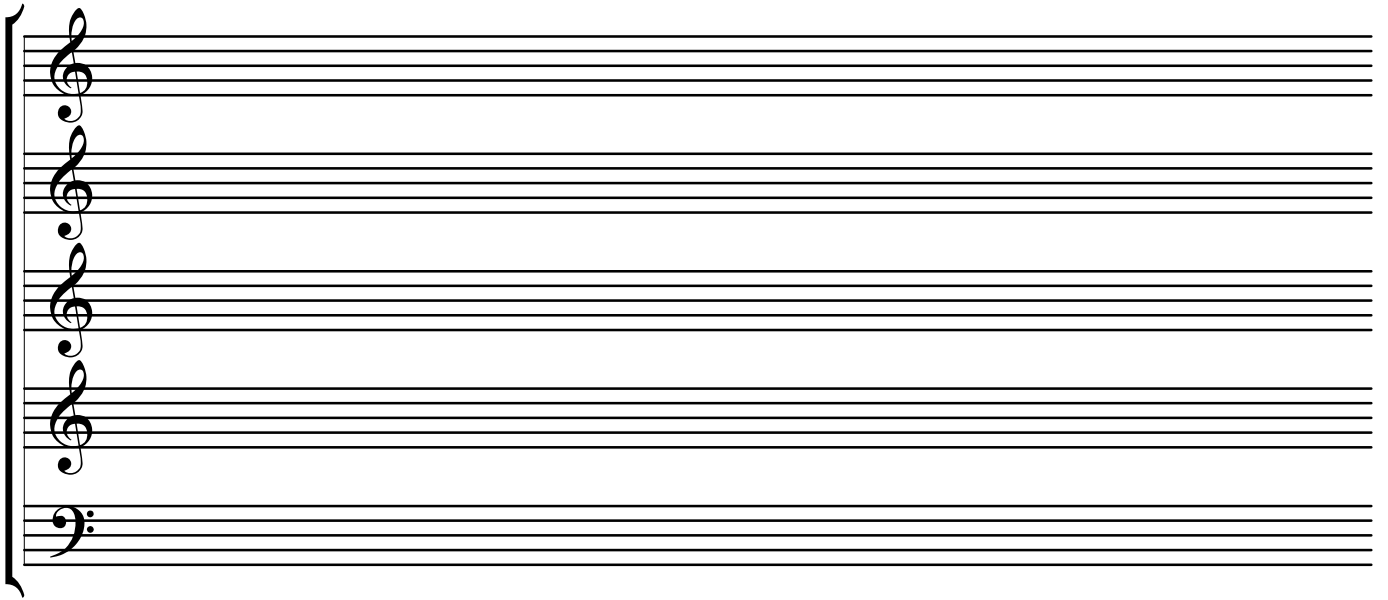




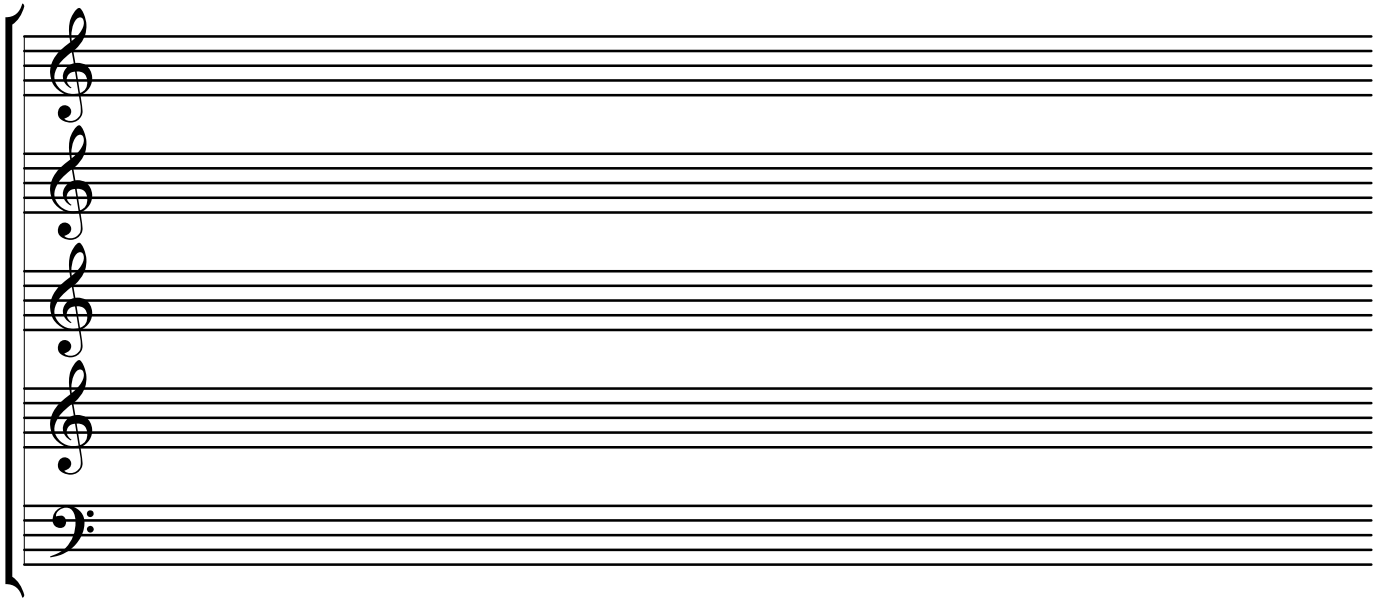




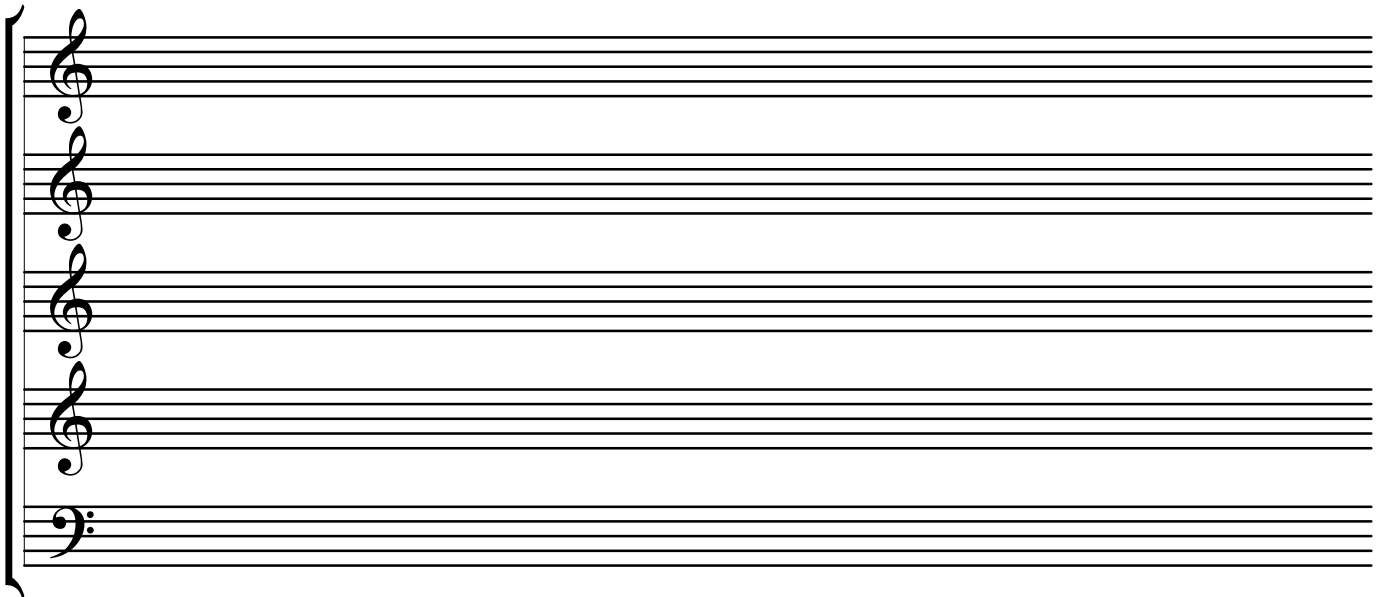




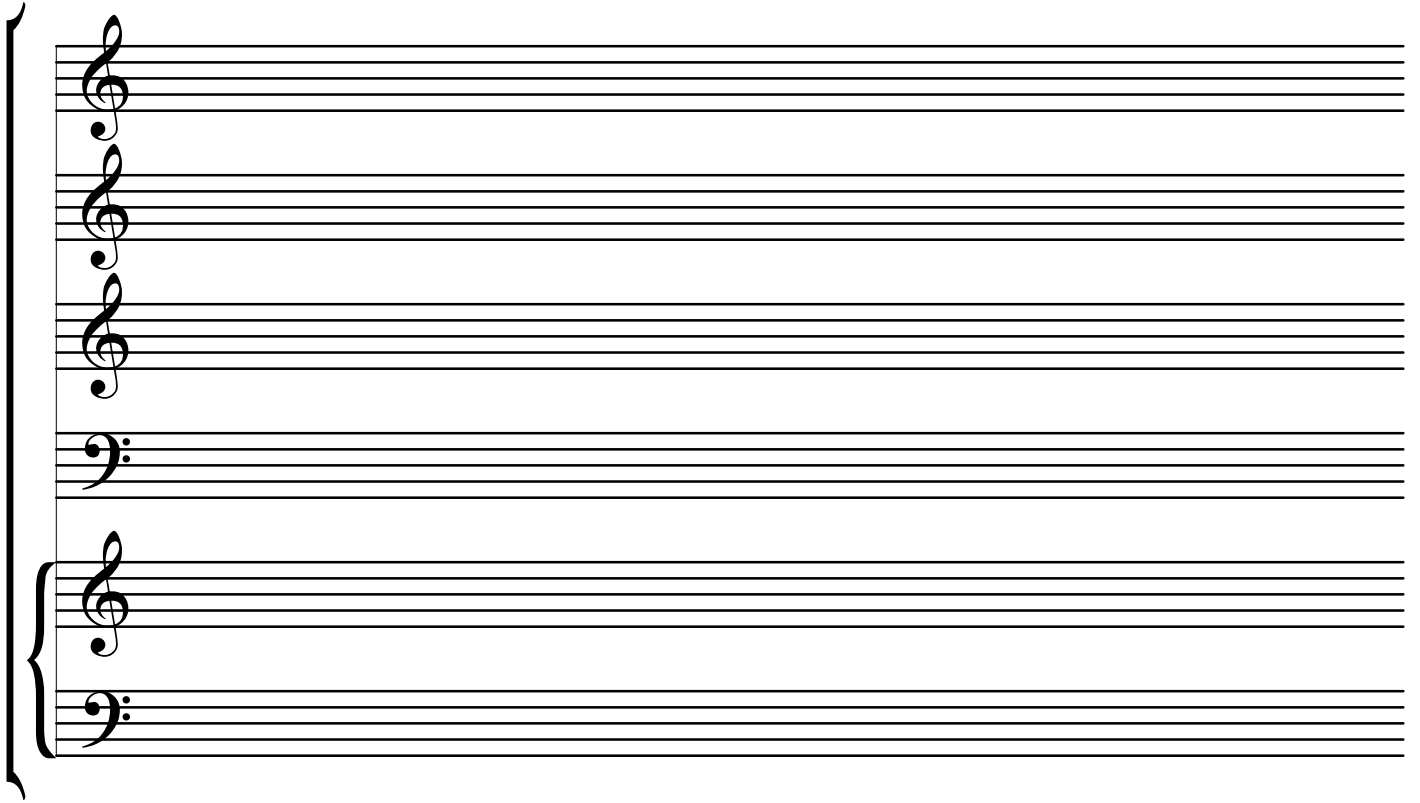
A system of four musical staves. The top three staves are grouped by a brace on the left and each begins with a treble clef. The bottom staff begins with a bass clef. All staves are empty.



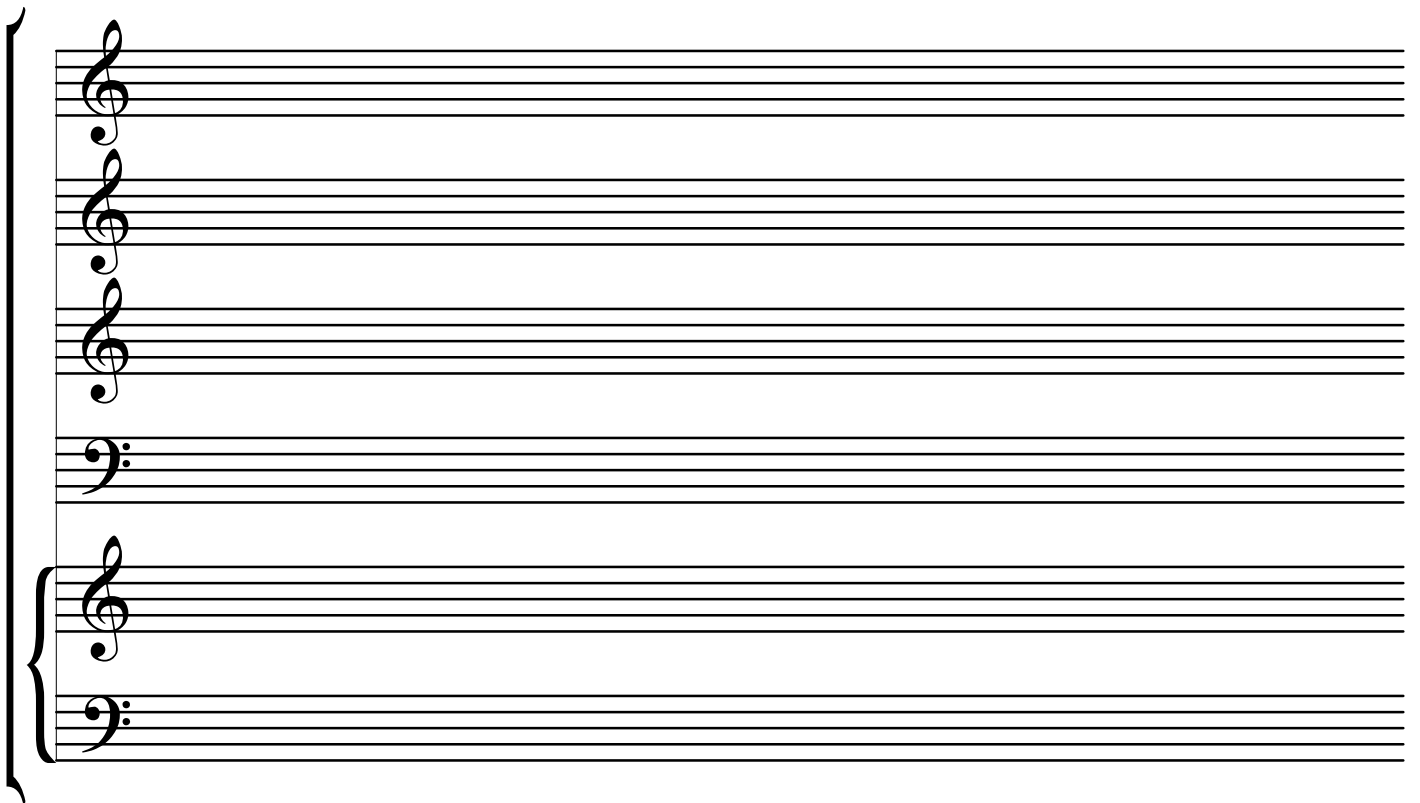
A system of four musical staves. The top three staves are grouped by a brace on the left and each begins with a treble clef. The bottom staff begins with a bass clef. All staves are empty.



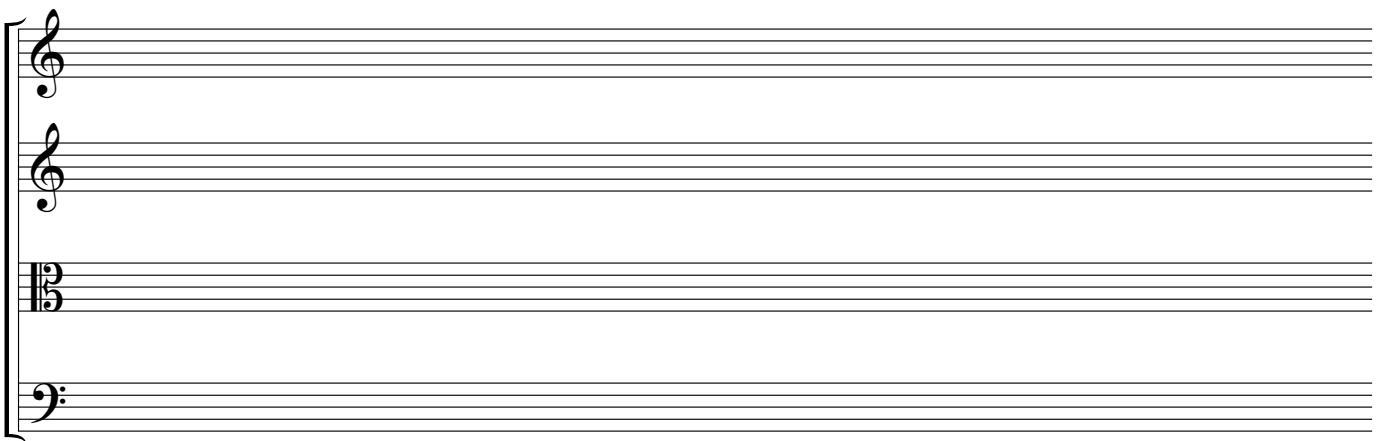
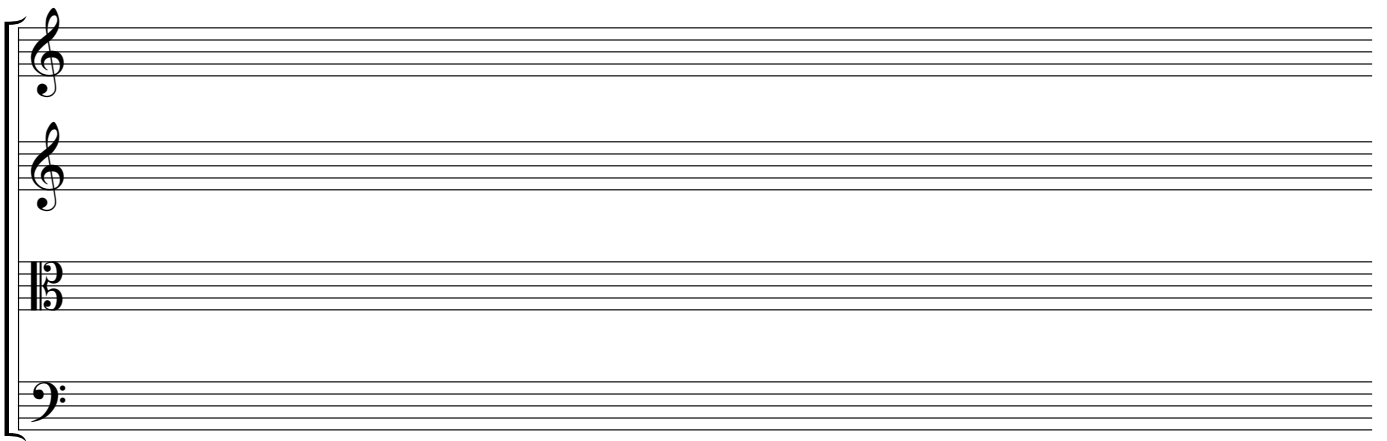
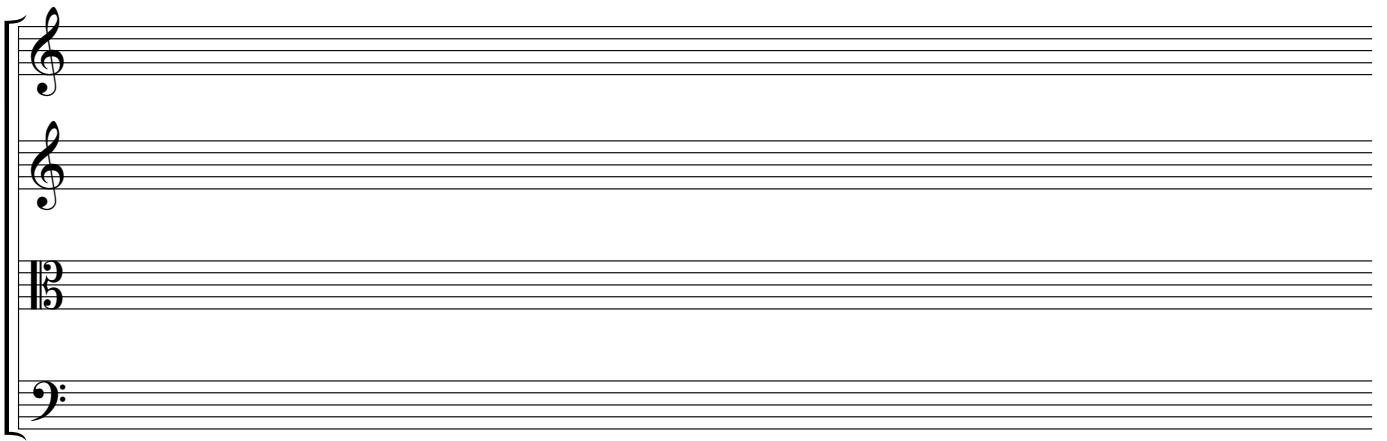
A system of four musical staves. The top three staves are grouped by a brace on the left and each begins with a treble clef. The bottom staff begins with a bass clef. All staves are empty.



A musical staff system consisting of two systems of staves. The first system has four staves: three treble clefs and one bass clef. The second system has two staves: one treble clef and one bass clef. A large brace on the left side groups all six staves together.



A second musical staff system, identical in structure to the first. It consists of two systems of staves: the first system has three treble clefs and one bass clef, and the second system has one treble clef and one bass clef. A large brace on the left side groups all six staves together.



**T**  
**A**  
**B**

**T**  
**A**  
**B**

**T**  
**A**  
**B**

**T**  
**A**  
**B**

**T**  
**A**  
**B**

**T**  
**A**  
**B**



**T**  
**A**  
**B**

**T**  
**A**  
**B**

**T**  
**A**  
**B**

**T**  
**A**  
**B**

**T**  
**A**  
**B**

**T**  
**A**  
**B**

**T**  
**A**  
**B**

**T**  
**A**  
**B**

**T**  
**A**  
**B**

**T**  
**A**  
**B**

**T**  
**A**  
**B**

**T**  
**A**  
**B**

A musical staff with a treble clef on the left. Below the staff, the letters 'T', 'A', and 'B' are stacked vertically, indicating a guitar tablature section.

A musical staff with a treble clef on the left. Below the staff, the letters 'T', 'A', and 'B' are stacked vertically, indicating a guitar tablature section.

A musical staff with a treble clef on the left. Below the staff, the letters 'T', 'A', and 'B' are stacked vertically, indicating a guitar tablature section.

A musical staff with a treble clef on the left. Below the staff, the letters 'T', 'A', and 'B' are stacked vertically, indicating a guitar tablature section.

**T**  
**A**  
**B**

**T**  
**A**  
**B**

**T**  
**A**  
**B**

**T**  
**A**  
**B**

**T**  
**A**  
**B**

**T**  
**A**  
**B**

**T**  
**A**  
**B**

**T**  
**A**  
**B**

A musical staff with a treble clef. Below the staff, the letters 'T', 'A', and 'B' are stacked vertically, indicating guitar tablature. The staff and the letters are empty.

A musical staff with a bass clef. Below the staff, the letters 'T', 'A', and 'B' are stacked vertically, indicating guitar tablature. The staff and the letters are empty.

A musical staff with a treble clef. Below the staff, the letters 'T', 'A', and 'B' are stacked vertically, indicating guitar tablature. The staff and the letters are empty.

A musical staff system consisting of two sets of five-line staves. The top set of staves is empty. The bottom set of staves has a treble clef on the left side. To the left of the bottom set of staves, the letters 'T', 'A', and 'B' are stacked vertically, indicating guitar tablature.

A musical staff system consisting of two sets of five-line staves. The top set of staves is empty. The bottom set of staves has a treble clef on the left side. To the left of the bottom set of staves, the letters 'T', 'A', and 'B' are stacked vertically, indicating guitar tablature.

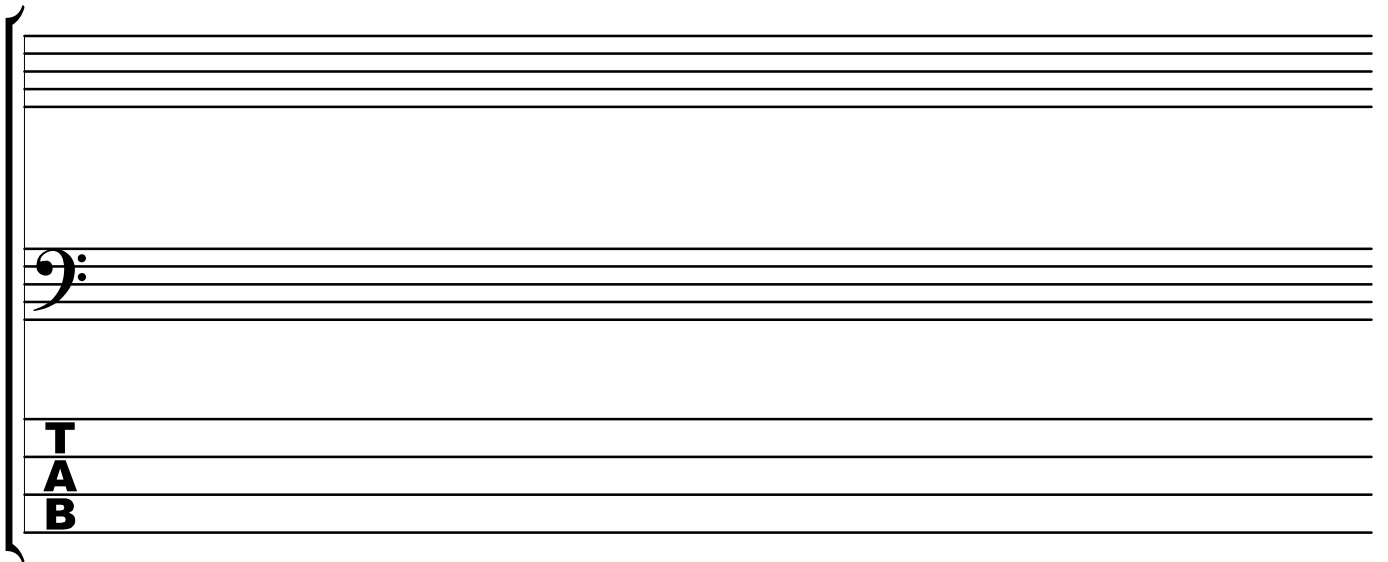
A musical staff system consisting of two sets of five-line staves. The top set of staves is empty. The bottom set of staves has a treble clef on the left side. To the left of the bottom set of staves, the letters 'T', 'A', and 'B' are stacked vertically, indicating guitar tablature.

A musical staff with a bass clef (F-clef) on the first line. Below the staff, the letters 'T', 'A', and 'B' are stacked vertically, indicating guitar tablature notation.

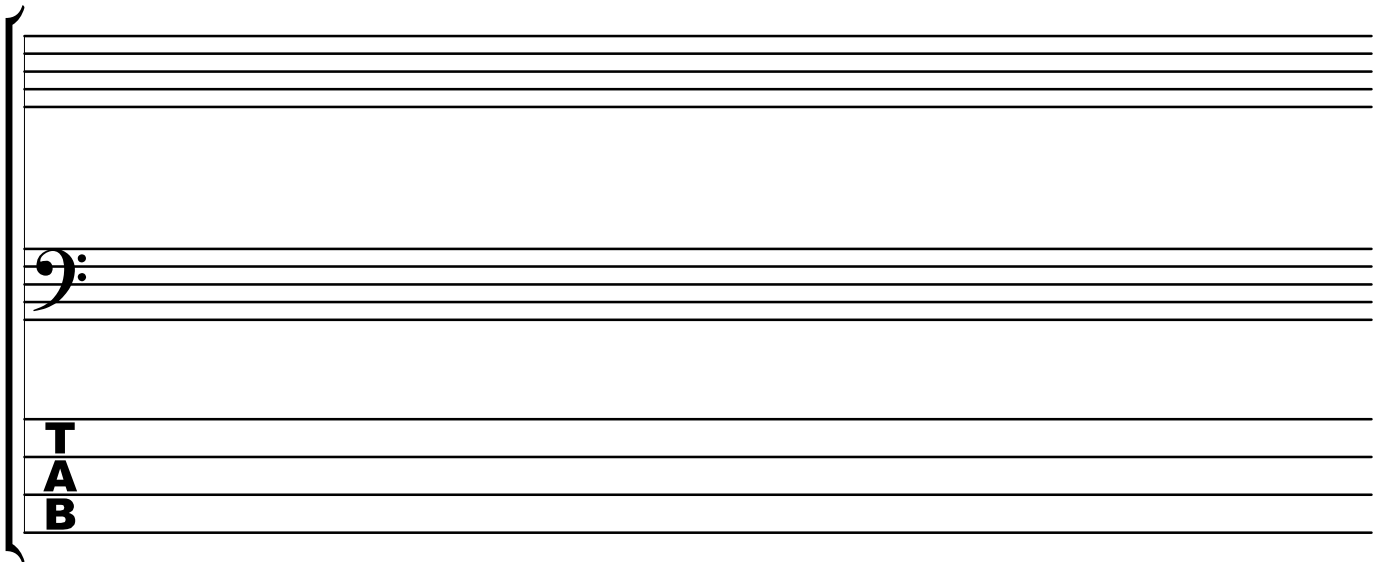
A musical staff with a bass clef (F-clef) on the first line. Below the staff, the letters 'T', 'A', and 'B' are stacked vertically, indicating guitar tablature notation.

A musical staff with a bass clef (F-clef) on the first line. Below the staff, the letters 'T', 'A', and 'B' are stacked vertically, indicating guitar tablature notation.

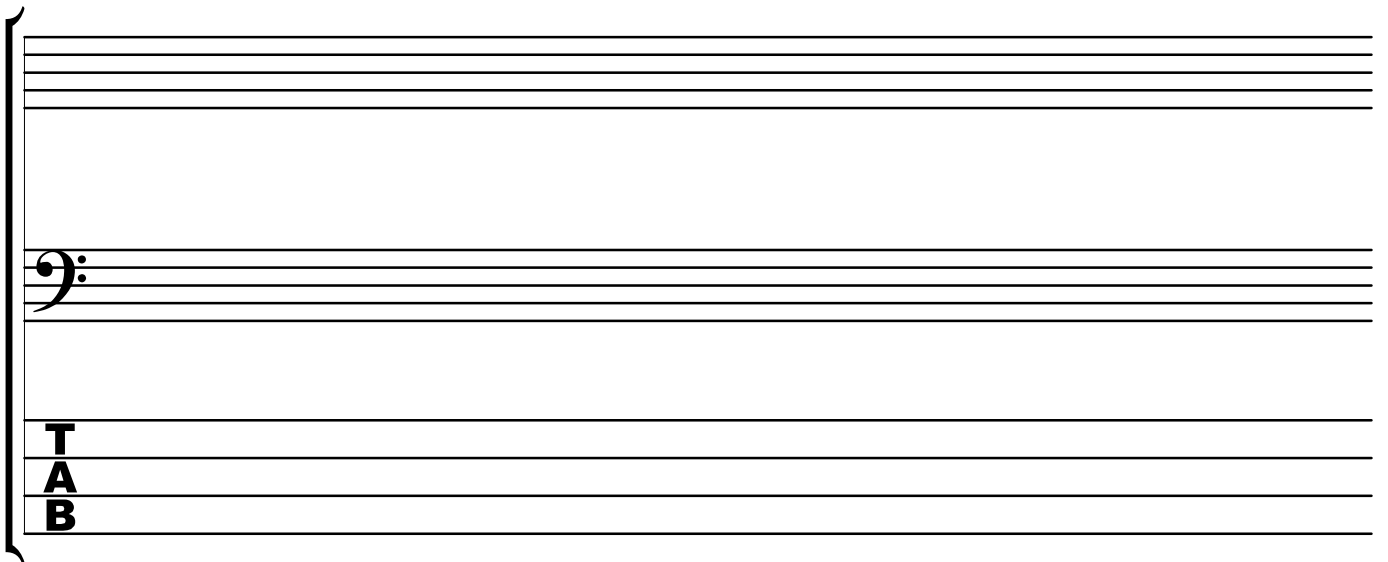
A musical staff with a bass clef (F-clef) on the first line. Below the staff, the letters 'T', 'A', and 'B' are stacked vertically, indicating guitar tablature notation.



A musical staff system consisting of five five-line staves. The second staff from the top has a bass clef (F-clef) positioned at the beginning. The third staff from the top has the letters 'T', 'A', and 'B' stacked vertically on the left side, indicating a guitar tablature section.



A musical staff system consisting of five five-line staves. The second staff from the top has a bass clef (F-clef) positioned at the beginning. The third staff from the top has the letters 'T', 'A', and 'B' stacked vertically on the left side, indicating a guitar tablature section.



A musical staff system consisting of five five-line staves. The second staff from the top has a bass clef (F-clef) positioned at the beginning. The third staff from the top has the letters 'T', 'A', and 'B' stacked vertically on the left side, indicating a guitar tablature section.